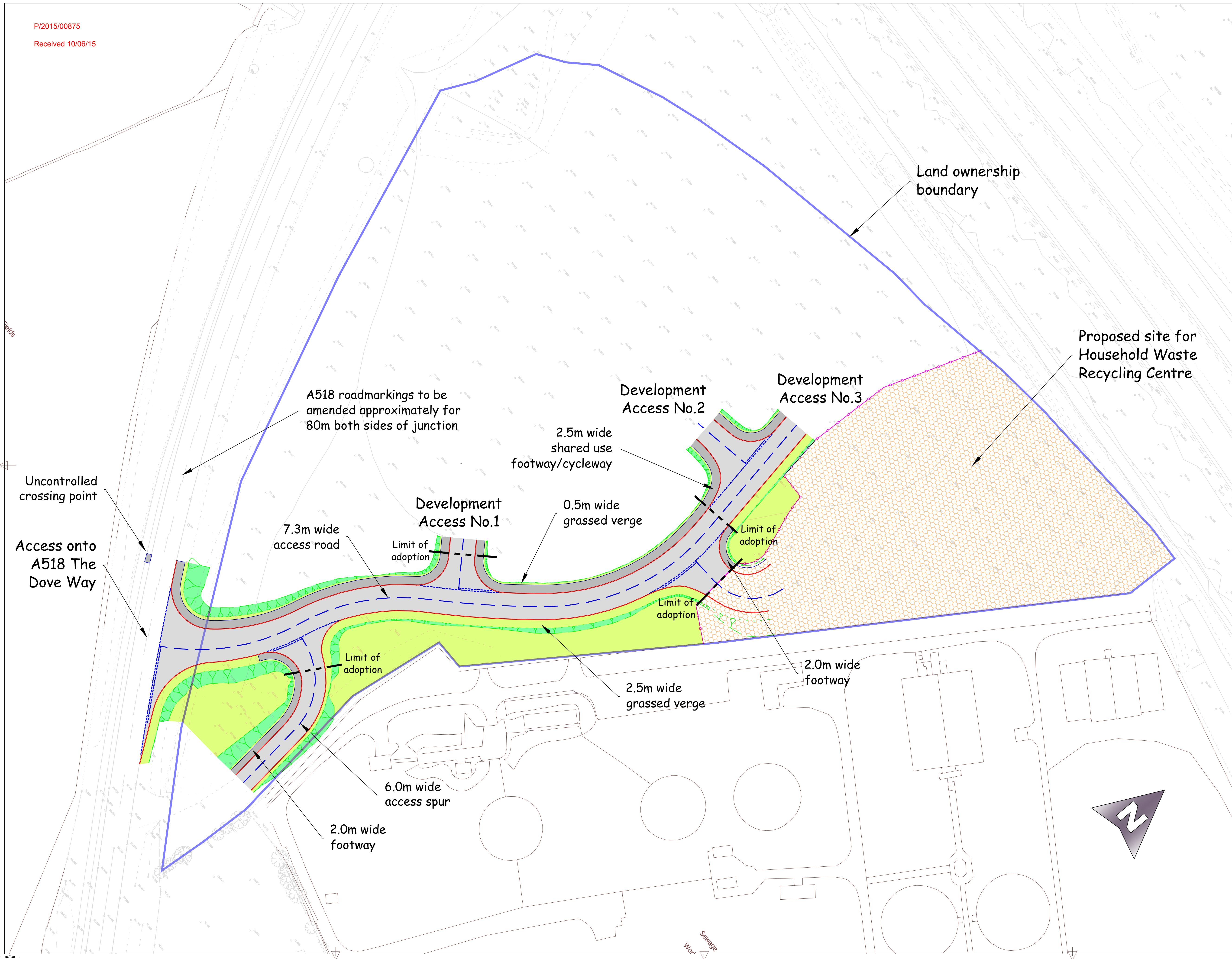


P/2015/00875  
Received 10/06/15

A1



Rev	Date	Detail	By
Revisions			



The Built County - Highways  
1 Staffordshire Place  
C/O Wedgwood Building,  
Tipping Street  
Stafford, ST16 2DH

### A518 The Dove Way, Uttoxeter - HWRC

### Access Highway Works General Arrangement

Prepared	Produced	Checked	Scale
MF	MF	SK	1/500

Grid Reference  
**409 350, 334 500**

Date	Size
June 2015	<b>A1</b>

Drawing No.  
**CDW8936/R00/06**

Status  
**Approved**

File Name: J:\Highways\Major Projects\Powerhouse Central\Dove Way HWRC\CDW8936\CDW8936-R00-06.dwg  
 Layout Name: A1-500